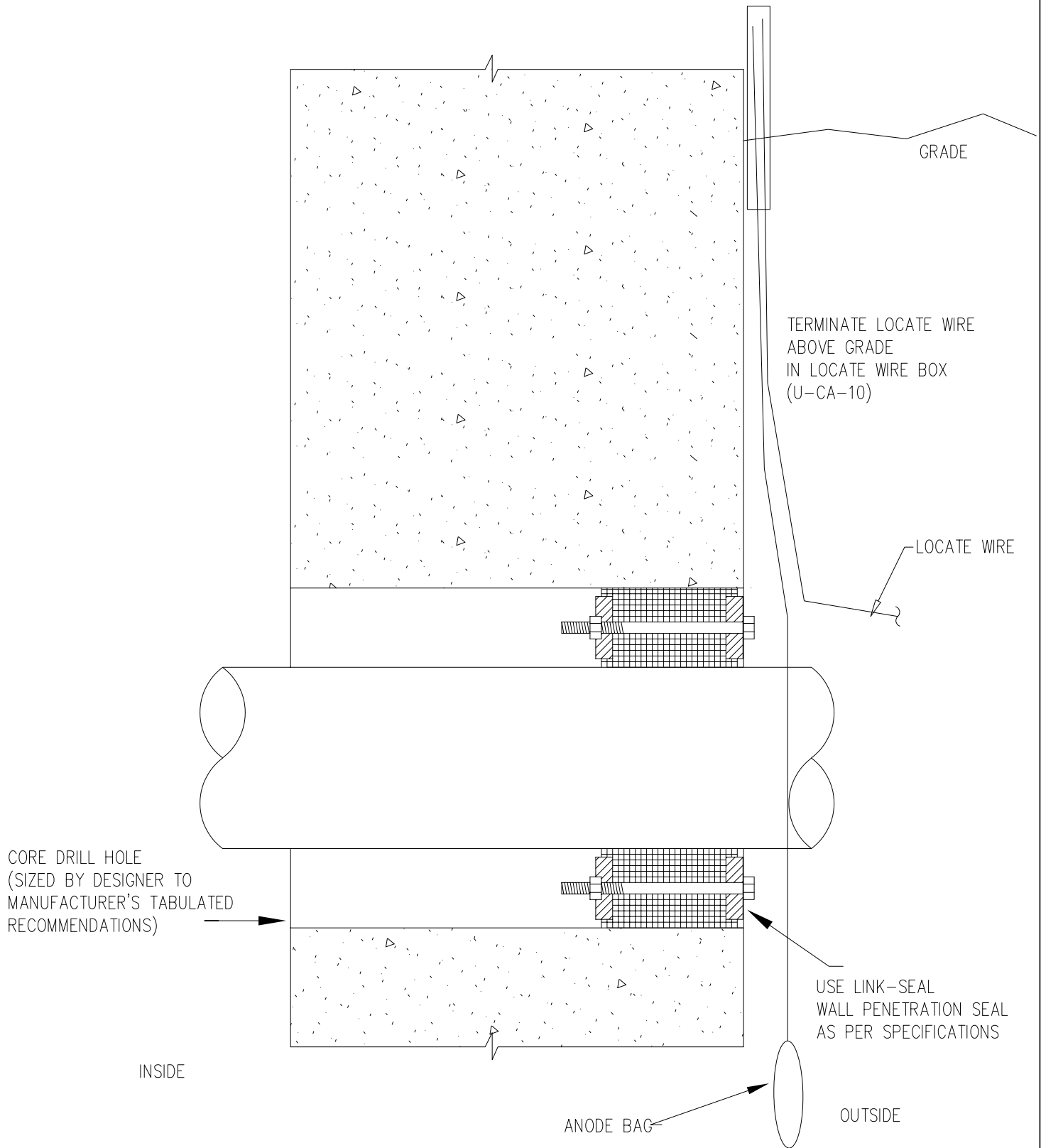


STANDARD CASING FOR BORED PIPE

Mechanical Detail
U—CA—7

Rev 2/14/2003

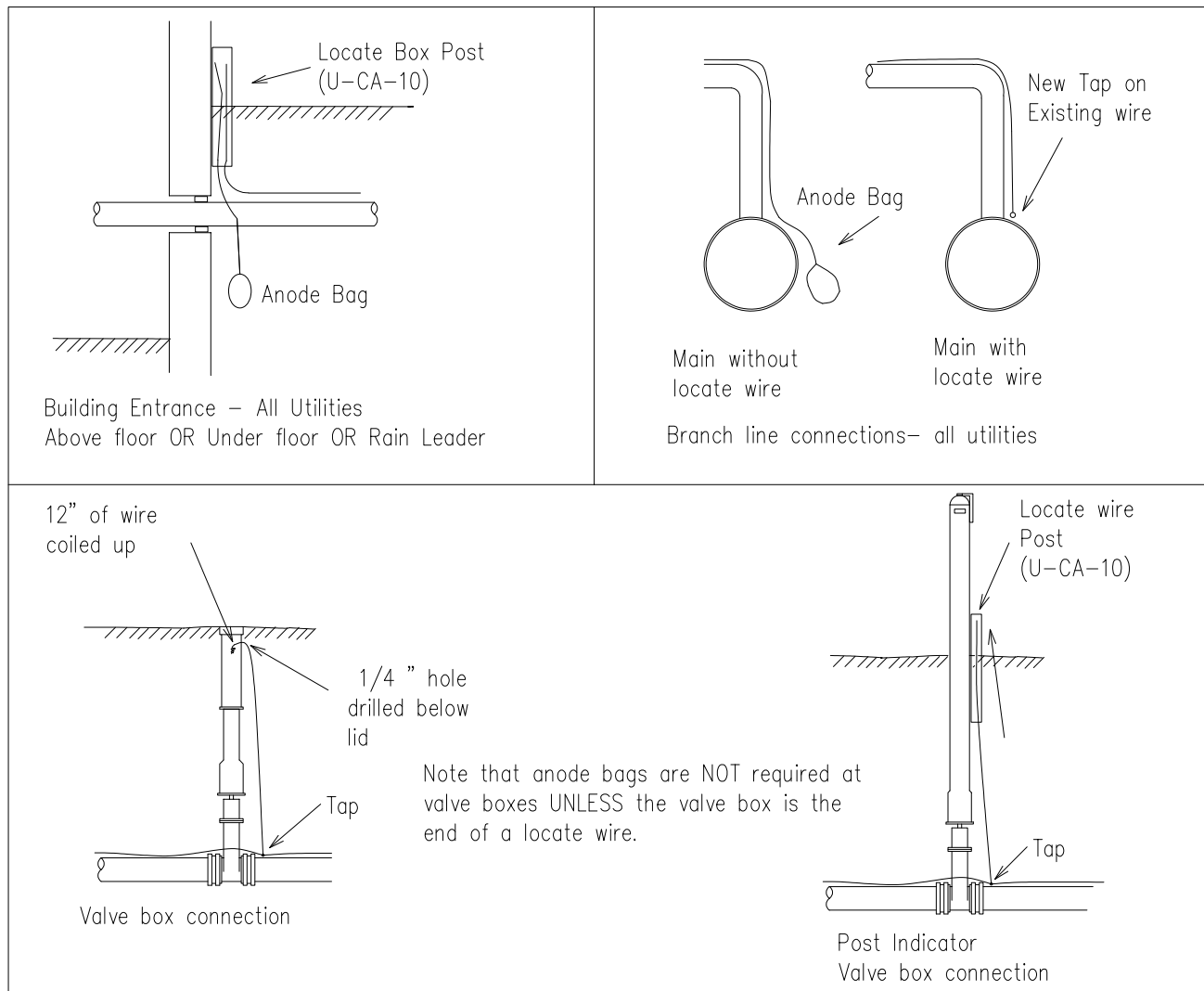


NOTE: IF THERE IS NO SURFACE FEATURE, SPLICE LOCATE WIRE TO ANODE BAG LEAD AND INSERT LOCATE WIRE WITH PIPE INTO BELOW GRADE STRUCTURE.

STANDARD WALL PENETRATION

Mechanical Detail
U-CA-8

Rev 6/10/2011



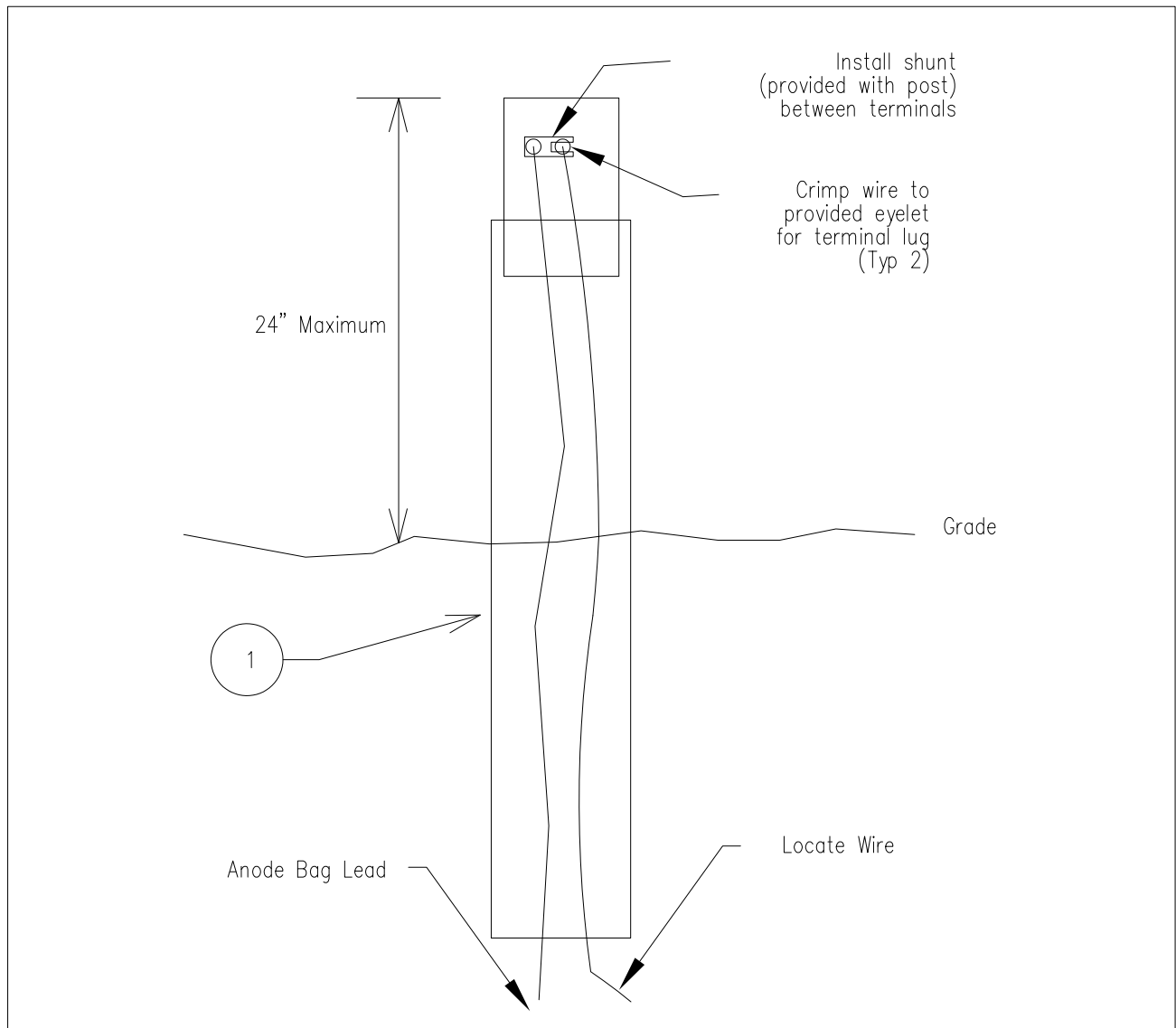
General Notes:

1. Locate wires shall be provided by Owner and installed by Contractor as per specifications. These notes give a general overview of requirements.
2. Locate wire to be steel cored copper 12 AWG with 30 mil polyethylene insulation (FP&M 7998.9675)
3. Locate wire to be run on top of pipe and be taped to pipe with duct tape every 10 feet.
4. 17 lb magnesium anode bags (7998.0550) to be placed at ends of wire, or as indicated in drawings. Bags are to be located 1 foot below pipe center line.
5. All connections and splices on the locate wire shall use a TI-064C Nicotap sleeve (7998.4500). Solder or wire nuts are not acceptable. Tap to be covered with heat shrink tubing (1758.0418)
6. Exposed surface mounted wires (such as on post indicator valves) shall be installed in a locate wire post (7998.1070) with the post extending a maximum of 24" above grade.

STANDARD LOCATE WIRE – ALL UTILITIES

Mechanical Detail
U – CA – 9

Rev 6/10/2011



General Notes:

1. Locate wire post to be provided by Owner and to be installed by Contractor as required by the standard details and specifications.
2. Locate wire post generally to be used for housing surface mounted locate wires, including but not limited to : post indicator valves, building entrances, rain leaders, gas meters.

Items:

1. 54" Long locate wire post per specs. FP&M Part #7998.1070.

LOCATE WIRE POST – ALL UTILITIES

Mechanical Detail
U—CA—10

Rev 6/10/2011

